

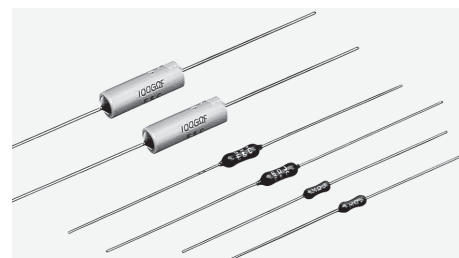
RH

超高Ultrahigh
TYPE

精密級超高抵抗器

Precision Ultrahigh Value Resistors

[RHA TYPE : Hermetically sealed type]



RH超高抵抗器は微小電流検出などに使用される抵抗器として開発された超高抵抗器で従来品と比較し、その安定性において著しい改良がなされております。

The RH Ultrahigh type resistors are designed for use in the detection of trickle current and for other similar purposes.

Their operating stability by far excels that of conventional models.

■特長/FEATURES

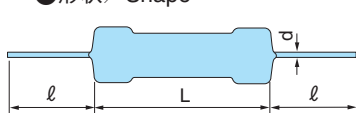
- 温度係数が小さい。
- 取り扱いやすい。
- 信頼性が高い。
- 経時変化、負荷寿命等に優れている。
- Small temperature coefficient.
- Easy to handle.
- High reliability.
- Minimized reduction in long-term stability and load life.

■特性/CHARACTERISTICS

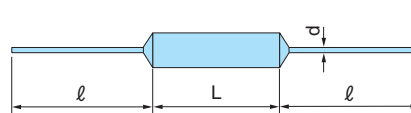
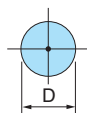
項目 Item	特性 Characteristics			試験方法 Test method
使用温度範囲 Operating temperature range	RH Type : $-35^{\circ}\text{C}\sim+70^{\circ}\text{C}$ RHA Type : $-30^{\circ}\text{C}\sim+70^{\circ}\text{C}$			
経時変化 Long-term stability	$\pm 1\%$			常温常湿 3,000時間 At normal temperature and humidity for 3,000hr.
高温経時変化 Reduction in long-term stability at high temperature	$-1\%\leq$			70°C恒温槽中1,000時間 In thermostatic oven maintained at 70°C for 1,000hr
絶縁抵抗 Insulation resistance	$>9.0\times 10^{10}\Omega\text{cm}$			40°C、90~95%RH、1,000時間、500V 40°C, 90 to 95%RH, 1,000hr, at 500V
電圧係数 Voltage coefficient	10G Ω ~15G Ω	15G Ω ~7000G Ω	7000G Ω ~10000G Ω	10V~100V 測定 Measured at 10V and 100V
	$-20\text{ppm/V}\leq$	$-100\text{ppm/V}\leq$		
			$-500\text{ppm/V}\leq$	

■製作範囲/PRODUCTION DATA

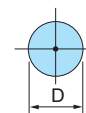
●形状/Shape



RH Ultrahigh type



RHA Type (Hermetically sealed type)



形名 Type	温度係数 Temperature coefficient (ppm/°C)	抵抗値範囲 Range of resistance values		最高使用電圧 Max. working voltage DC(kV)	標準波パルス電圧 Impulse voltage (kV) 1.2×50μsec.	寸法/Dimensions (mm) [カッコ内はRHAタイプ/(RHA)type]				抵抗値許容差 Resistance tolerance (%)
		最小Min. (G Ω)	最大Max. (G Ω)			L	D	l	d	
RH1/4HVS	± 400	1	5	0.75	1.5	9±1	3±1	38±3	0.6±0.05	± 1 (F) ± 2 (G) $\leq 1\text{T}\Omega$ ± 5 (J) ± 10 (K) $\leq 10\text{T}\Omega$
RH1HVS (RHA2S)	± 200	10	15	2	4	14.5±1 (14±0.5)	4.5±1 (5.1±0.2)	38±3	0.8±0.05	
	± 400	15	50							
RH2HVS (RHA3S)	± 200	10	100	5	10	26.5±1 (27±0.5)	5.5±1 (6.5±0.2)	38±3	1±0.05	
	± 400	100	300							
	± 1000	300	600							
RH3HVS (RHA5S)	± 1500	600	3000	10	20	42±2 (42±0.5)	5.5±1 (6.5±0.2)	38±3	1±0.05	
	± 200	10	100							
	± 400	100	600							
	± 1000	600	1000							
	± 1500	1000	10000							

RHAタイプ

RHAタイプは、RH超高タイプの耐湿性、経時変化をさらに改良し信頼性を高めた抵抗器です。

The RHA type as an improved version of the RH type Ultrahigh Value Resistor is highly resistant to humidity, protected against a long-term stability, and offers increased reliability.